

REPLICA COPY



A.D. 1868, 7th JANUARY. N° 58.

Needle Cases.

LETTERS PATENT to William Avery, of the Firm of William Avery and Son, of Redditch, in the County of Worcester, Needle Manufacturers, for the Invention of "IMPROVEMENTS IN THE MANUFACTURE OF NEEDLE CASES."

Sealed the 19th June 1868, and dated the 7th January 1868.

PROVISIONAL SPECIFICATION left by the said William Avery at the Office of the Commissioners of Patents, with his Petition, on the 7th January 1868.

I, WILLIAM AVERY, of the Firm of William Avery and Son, of Redditch, in the County of Worcester, Needle Manufacturers, do hereby declare the nature of the said Invention for "IMPROVEMENTS IN THE MANUFACTURE OF NEEDLE CASES," to be as follows:—

My Invention consists of the improvements herein-after described in manufacturing needle cases for holding packets of needles, by which improvements the needles are protected against the injurious effects of damp, and are also more effectually secured against injury than in needle cases of the ordinary kind.

In making needle cases according to my Invention I employ thin sheet brass or other thin sheet metal or alloy, which I shape into a small

Avery's Improvements in the Manufacture of Needle Cases.

flat rectangular case of a size proper to hold a packet of needles in the following way:—I cut out two blanks by means of a press and cutting tools, one of the said blanks being a little wider and a little longer than the case to be formed. By means of ordinary shaping or pressing tools I turn up the longer sides of this blank and one of 5 the shorter sides so as to form a trough-like edge on three sides of the blank; the other blank I form of a nearly similar figure to that last described but somewhat smaller. In putting the two blanks or halves of the case together the smaller one is inserted in the larger one by preference by a sliding motion, the concave sides being presented to 10 each other, and the smaller one being pushed home; in the larger one there is formed a flat thin hollow metallic case closed at three sides and open at the fourth. By means of pressure the two parts of the case are closed upon one another so that they can no longer be separated; or the case may be made out of one sheet metal blank. According 15 to this improvement a sheet metal blank of more than double the width of the case to be made is employed. One half of the blank has a length somewhat greater than the case to be made, and the other half has a length equal to that of the case. By folding the blank at its middle, in the direction of its length, and turning its longer 20 sides upon one another, and also folding up the projecting piece at the end of one half of the blank there is formed a case similar in figure to the one formed by the use of two blanks. A metallic flap for the purpose of covering the tops of the needles and the open end of the case may be hinged to the case made in either of the ways described. 25

SPECIFICATION in pursuance of the conditions of the Letters Patent, filed by the said William Avery in the Great Seal Patent Office, on the 2nd July 1868.

TO ALL TO WHOM THESE PRESENTS SHALL COME, I, WILLIAM AVERY, of the Firm of William Avery and Son, of Redditch, in the 30 County of Worcester, Needle Manufacturers, send greeting.

WHEREAS Her most Excellent Majesty Queen Victoria, by Her Letters Patent, bearing date the Seventh day of January, in the year of our Lord One thousand eight hundred and sixty-eight, in the thirty-first year of Her reign, did, for Herself, Her heirs and successors, 35 give and grant unto me, the said William Avery, Her special licence

Avery's Improvements in the Manufacture of Needle Cases.

that I, the said William Avery, my executors, administrators, and assigns, or such others as I, the said William Avery, my executors, administrators, and assigns, should at any time agree with, and no others, from time to time and at all thereafter during the term therein
5 expressed, should and lawfully might make, use, exercise, and vend, within the United Kingdom of Great Britain and Ireland, the Channel Islands, and Isle of Man, an Invention for "**IMPROVEMENTS IN THE MANUFACTURE OF NEEDLE CASES,**" upon the condition (amongst others) that I, the said William Avery, my executors or administrators, by
10 an instrument in writing under my, or their, or one of their hands and seals, should particularly describe and ascertain the nature of the said Invention and in what manner the same was to be performed, and cause the same to be filed in the Great Seal Patent Office within six calendar months next and immediately after the date of the said
15 Letters Patent.

NOW KNOW YE, that I, the said William Avery, do hereby declare the nature of the said Invention, and in what manner the same is to be performed, to be particularly described and ascertained in and by the following statement thereof, that is to say:—

20 My Invention consists of the improvements herein-after described, and illustrated in the accompanying Drawing, in manufacturing needle cases for holding packets of needles, by which improvements the needles are protected against the injurious effects of damp, and are also more effectually secured against injury than in needle cases of the ordinary
25 kind.

In making needle cases according to my Invention I employ thin sheet brass or other thin sheet metal or alloy, which I shape into a small flat rectangular case of a size proper to hold a packet of needles in the following way:—I cut out two blanks by means of a press and cutting
30 tools, one of the said blanks being a little wider and a little longer than the case to be formed. By means of ordinary shaping or pressing tools I turn up the longer sides of this blank and one of the shorter sides so as to form a trough-like edge on three sides of the blank, the other blank I form of a nearly similar figure to that last described, but somewhat
35 smaller. In putting the two blanks or halves of the case together the smaller one is inserted in the larger one by preference by a sliding motion, the concave sides being presented to each other, and the smaller one being pushed home; in the larger one there is formed a flat thin

Avery's Improvements in the Manufacture of Needle Cases.

metallic case closed at three sides and open at the fourth. By means of pressure the two parts of the case are closed upon one another so that they can no longer be separated.

Figure 1 represents in section and elevation one of the trough-shaped metal blanks or halves of the needle case made in the manner described, 5 and Figure 2 represents in section and elevation the other of the said blanks or halves of the needle case. The trough-shaped edges of the blank or half *a* are marked *c*, and the trough-shaped edges of the blank or half *b* are marked *d*. The faces of the blanks *a*, *b*, are raised or embossed, or ornamented with any desired pattern. Figure 3 represents 10 in front elevation, and Figure 4 in plan, a thin flat metallic case closed at its three sides and open at its top *e*, made by engaging the side trough edges *c*, *d*, of the two blanks or halves *a*, *b*, together in the manner represented in the plan, Figure 4. The front half of the case, Figures 3 and 4, has a different ornamental pattern upon it from that 15 represented in Figure 1. Figure 5 represents in front elevation, side elevation, and plan the manner in which the two halves *a*, *b*, of the case are engaged with one another by a sliding motion, and also shows a packet of needles *f* about to be inserted in the case. After the halves *a*, *b*, of the case have been engaged together the trough edges *c*, *d*, at the 20 sides of the case are closed upon one another so as to fix the said halves together. The open top of the case may be provided with a hinged flap if thought desirable. Instead of making the needle case out of two blanks one sheet metal blank may be employed. According to this improvement a sheet metal blank of more than double the width of the 25 case to be made is employed. One half of the blank has a length somewhat greater than the case to be made and the other half has a length equal to that of the case. By folding the blank at its middle in the direction of its length and turning its longer sides upon one another and also folding up the projecting piece at the end of one half of the blank 30 there is formed a case similar in figure to the one formed by the use of two blanks. Figure 6 represents the single blank from which the case is to be made, the half of the blank, marked *g*, being broader and longer than the half marked *h*. By folding the blank at its middle on the dotted line *i* and turning the projecting side piece *k* and bottom piece *l* 35 upon the folded side *h* a flat case open at top is formed as represented in side elevation and end elevation in Figure 7, where the parts are marked with the same letters as corresponding parts in Figure 6. Instead of making one half of the blank both broader and longer than the other half

Avery's Improvements in the Manufacture of Needle Cases.

both halves may be of the same length, one half being broader than the other half. Figure 8 represents a blank of this kind, *g* being the narrow half and *h* the broad half of the blank. By folding the narrow half *g* at its middle on the dotted line *i* and afterwards folding the side projecting pieces *k, k*, upon the folded half *g* a flat case open at top is produced. Figure 9 represents an end elevation and side elevation of a needle case produced from the blank, Figure 8.

Having now described the nature of my Invention, and the manner in which the same is to be performed, I wish it to be understood that I do not limit myself to the precise details herein described and illustrated, as the same may be varied without departing from the nature of my Invention; but I claim as my Invention, the improvements in the manufacture of needle cases, herein-before described and illustrated in the accompanying Drawing, that is to say, making cases for holding packets of needles from two blanks or pieces or from one blank or piece of thin sheet brass or other thin sheet metal or alloy, the said blank or blanks being made into a flat case, substantially in the manner described and illustrated.

In witness whereof, I, the said William Avery, have hereunto set my hand and seal, this First day of July, in the year of our Lord One thousand eight hundred and sixty-eight.

WILLIAM AVERY. (L.S.)

Witness,

RICHARD SKERRETT,

Clerk to George Shaw,
Birmingham.

LONDON:

Printed by GEORGE EDWARD EYRE and WILLIAM SPOTTISWOODE,
Printers to the Queen's most Excellent Majesty. 1868.

FIG. 6.

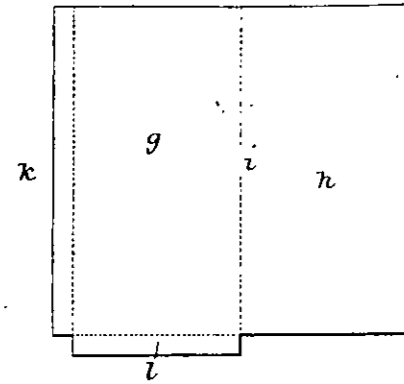


FIG. 1.

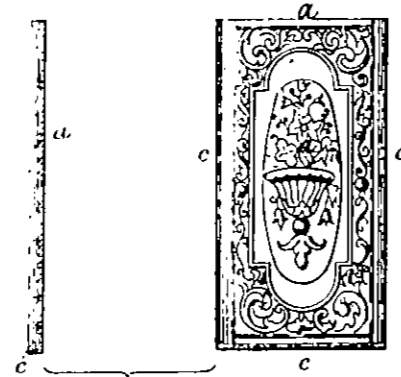


FIG. 3.



FIG. 5.

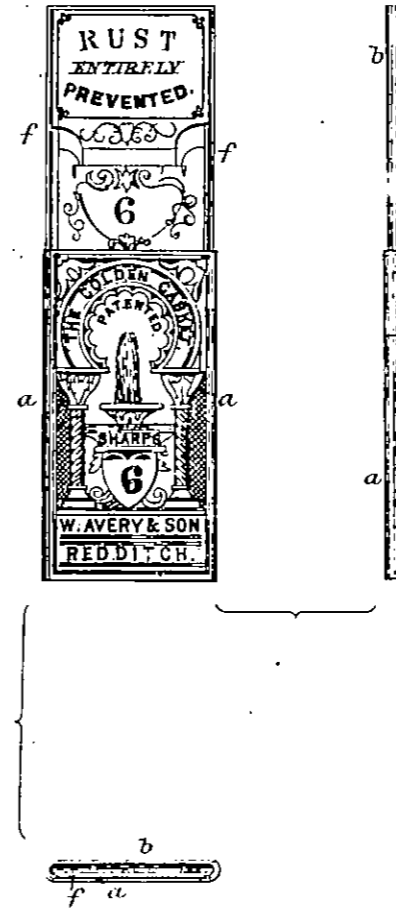


FIG. 8.

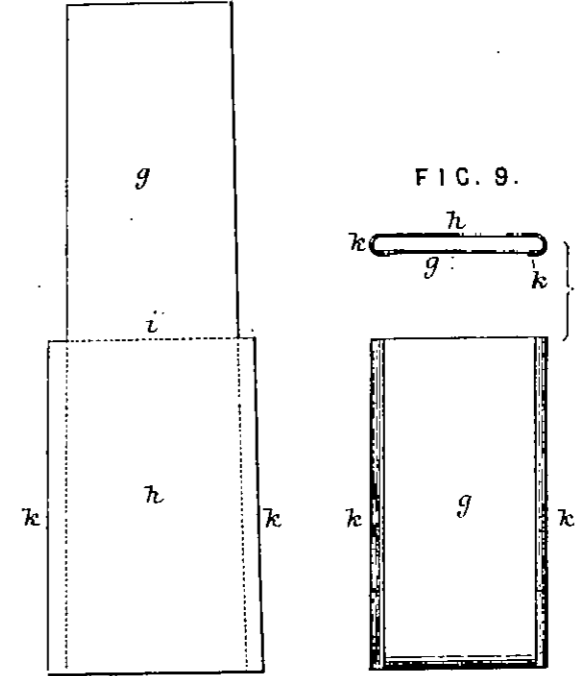


FIG. 9.

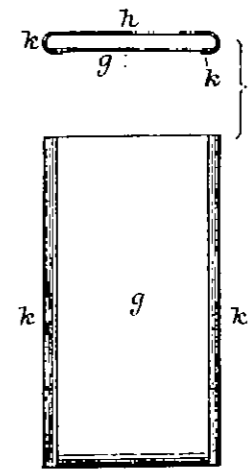


FIG. 7.

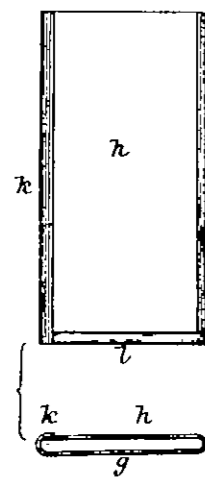


FIG. 2.

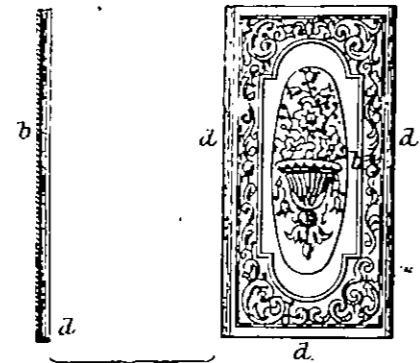
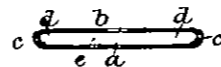


FIG. 4.



The filed drawing is partly colored.

Drawn on Stone by Malby & Sons.